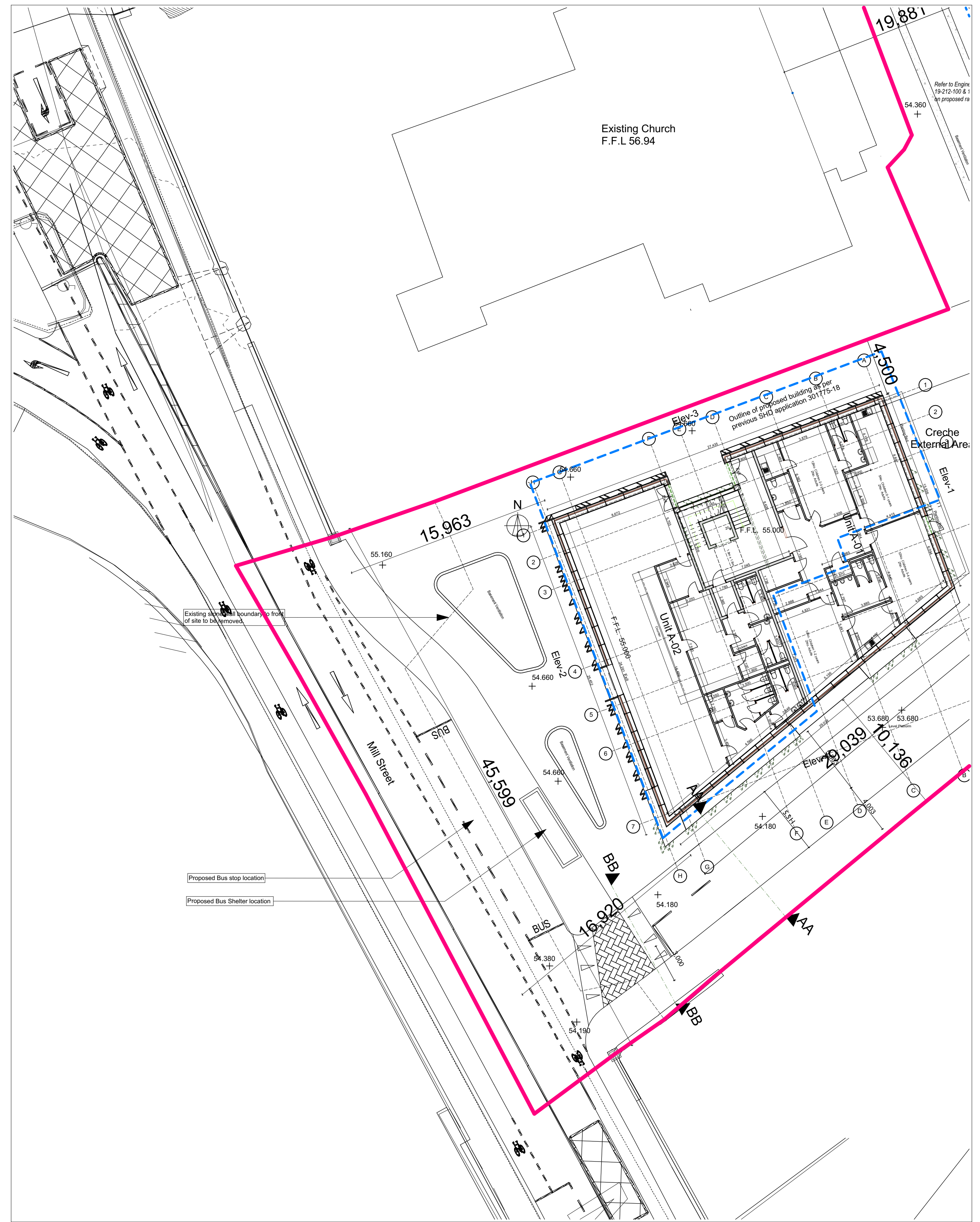


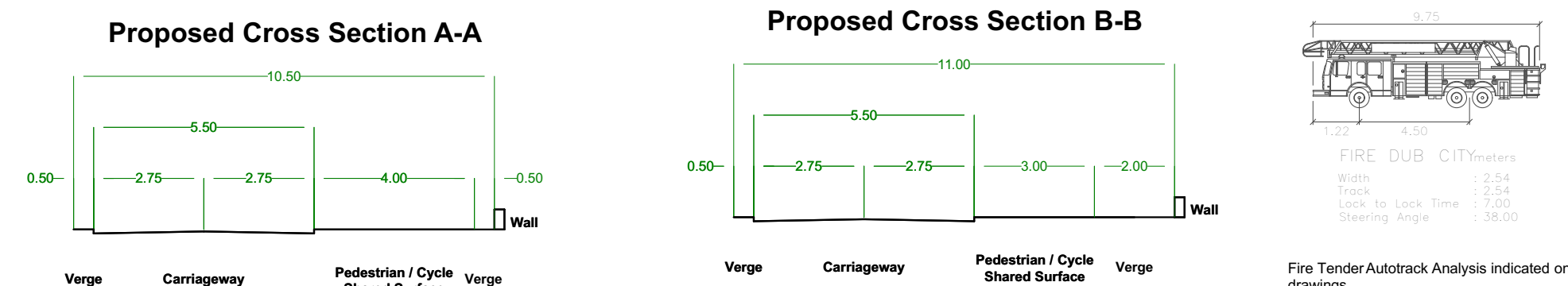
Option 1- Proposed Entrance Detail

1:200



Option 2 - Entrance Detail with any Future Part VIII Bus Stop

1:200



Fire Tender Autotrack Analysis indicated on drawings

Note: Refer to Landscaping Drawings 6529-L-100A and 6529-L-102A for all proposed hard and soft landscaping.

Site Boundary

| REV | DATE | DESCRIPTION | APPROVED |
|-----|----------|-------------------------------------|----------|
| A | 08.11.19 | Drawings issued for SHD Application | DR |

Michael Fitzpatrick Architects Ltd

©MICHAEL FITZPATRICK ARCHITECTS LIMITED
COPYRIGHT RESERVED

JOB DETAILS
Proposed Development at Millstreet
Maynooth Co. Kildare for Ladas Property
Company Unlimited Company (As part of
the Corner Group)

| Scale | As Indicated | Drawn by | PL-16-164-006 | Amend. |
|----------|--------------|-------------|--------------------------------|--------|
| Date | 01/12/2019 | Description | Proposed Site Entrance-Details | |
| Drawn by | David Reilly | Checked by | Michael Fitzpatrick | |

Main Street
Bullerbridge
Co. Cavan
w - www.mfarchitects.ie
e - info@mfarchitects.ie
t - 049 4365800

2016 2016 2016
RAI RAI RAI